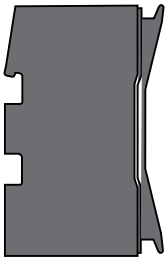


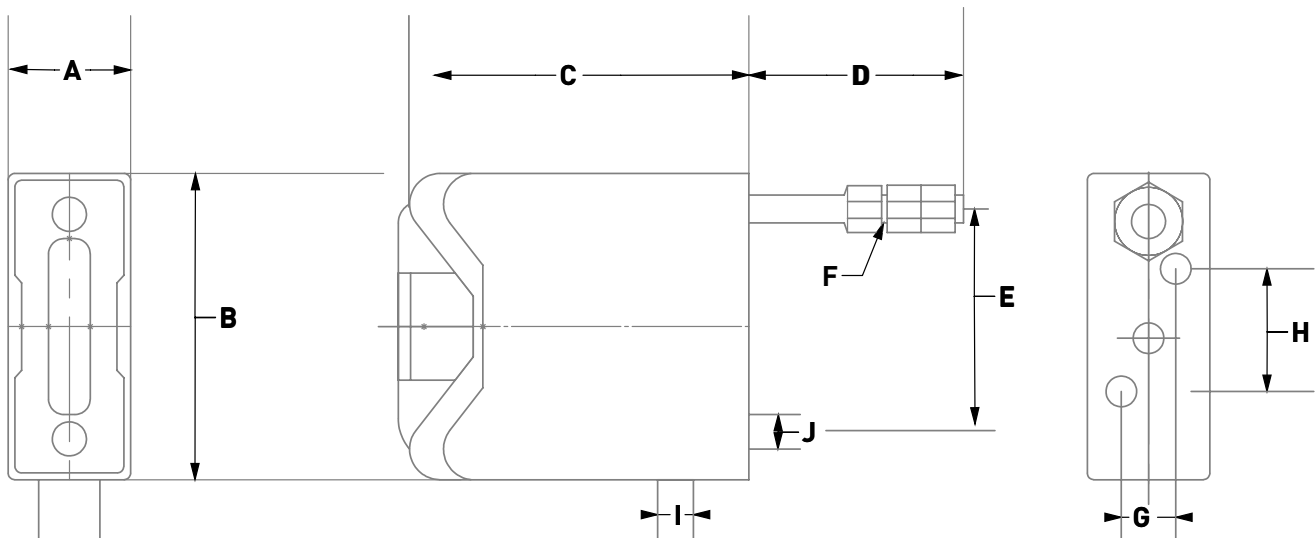
NEW FUSEHOLDERS RANGE



FUSE HOLDERS DIMENSIONS

DIMENSION	A	B	C	D	E	F	G	H	I	J
V32Cxx	25	77	58	39	56	Ø6	0	0	Ø6.4	Ø6.4
V63Cxx	32	91	67	70	64	Ø8	0	0	Ø8.5	Ø8.5
VRS63xx	35	110	75	84	78	Ø8	13	6.5	Ø9.5	Ø9.5
V63xxxx	35	105	71	0	0	0	12.5	6	Ø9.0	Ø9.0
VRS100xx	51	140	100	87	94	Ø10	19	22	Ø12.7	Ø12.7

All dimensions in mm



VYNCO

WWW.VYNCO.CO.NZ

facebook.com/vyncoindustriesltd/

AUCKLAND OFFICE

09 525 6051

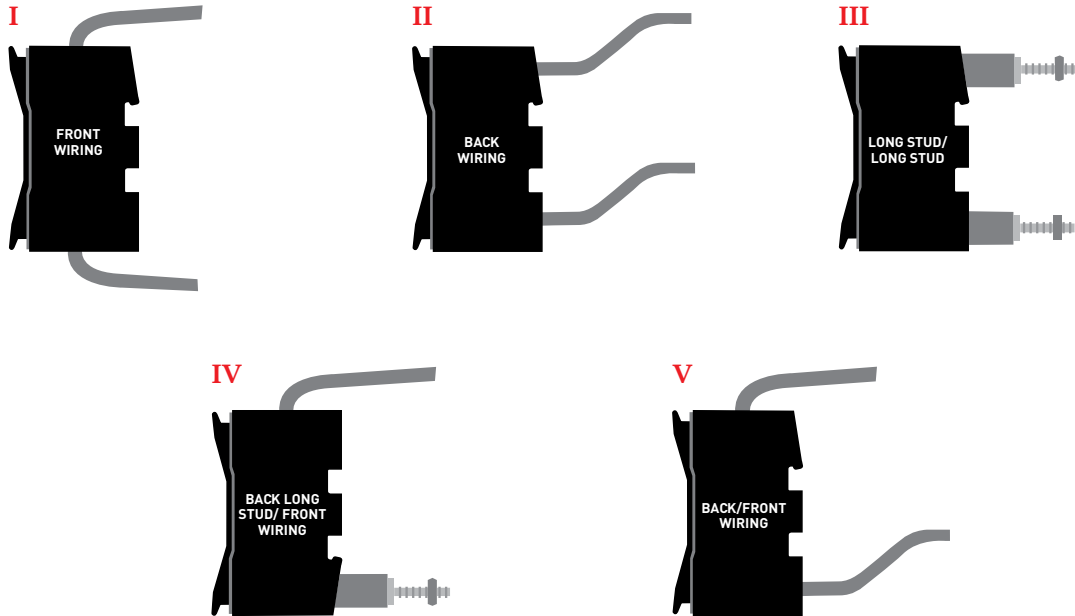
vyncoauck@vynco.co.nz

CHRISTCHURCH OFFICE

03 379 9283

chchsales@vynco.co.nz

FUSE HOLDER SELECTION GUIDE



FIXING CENTRES	CURRENT RATING (A)	VOLTAGE	WIRING CONFIGURATION		DIAGRAM	ORDER CODE	TRADE PRICE \$ excl. GST	FUSE LINK OPTIONS
			Front Wire	Back Wire				
CLIP IN	32	415V a.c.	Front Wire	Front Wire	I	V32CFF	PLEASE CALL OUR CUSTOMER SERVICE FOR CURRENT PRICING	NS2 – NS32
			Back Wire	Back Wire	II	V32CEE		
			Back Long Stud	Back Long Stud	III	V32CBB		
			Back Long Stud	Front Wire	IV	V32CFB		
	63	415V a.c.	Front Wire	Front Wire	I	V63CFF		ES20 – ES63
			Back Wire	Back Wire	II	V63CEE		
			Back Long Stud	Back Long Stud	III	V63CBB		
			Back Long Stud	Front Wire	IV	V63CFB		
BOLT IN 73mm	63	690V a.c.	Front Wire	Front Wire	I	VRS63H	TIA2 – TIA32 TIS40 – TIS63	
		500V a.c.	Back Wire	Back Wire	II	V63BEBE		
		690V a.c.	Back Long Stud	Back Long Stud	III	VRS63P		
		690V a.c.	Back Long Stud	Front Wire	IV	VRS63PH		
		500V a.c.	Front Wire	Back Wire	V	V63BEED		
BOLT IN 94mm	100	690V a.c.	Front Wire	Front Wire	I	VRS100H	TCP40 TO TCP100	
			Back Wire	Back Wire	II	VRS100BW		
			Back Long Stud	Back Long Stud	III	VRS100P		
			Back Long Stud	Front Wire	IV	VRS100PH		