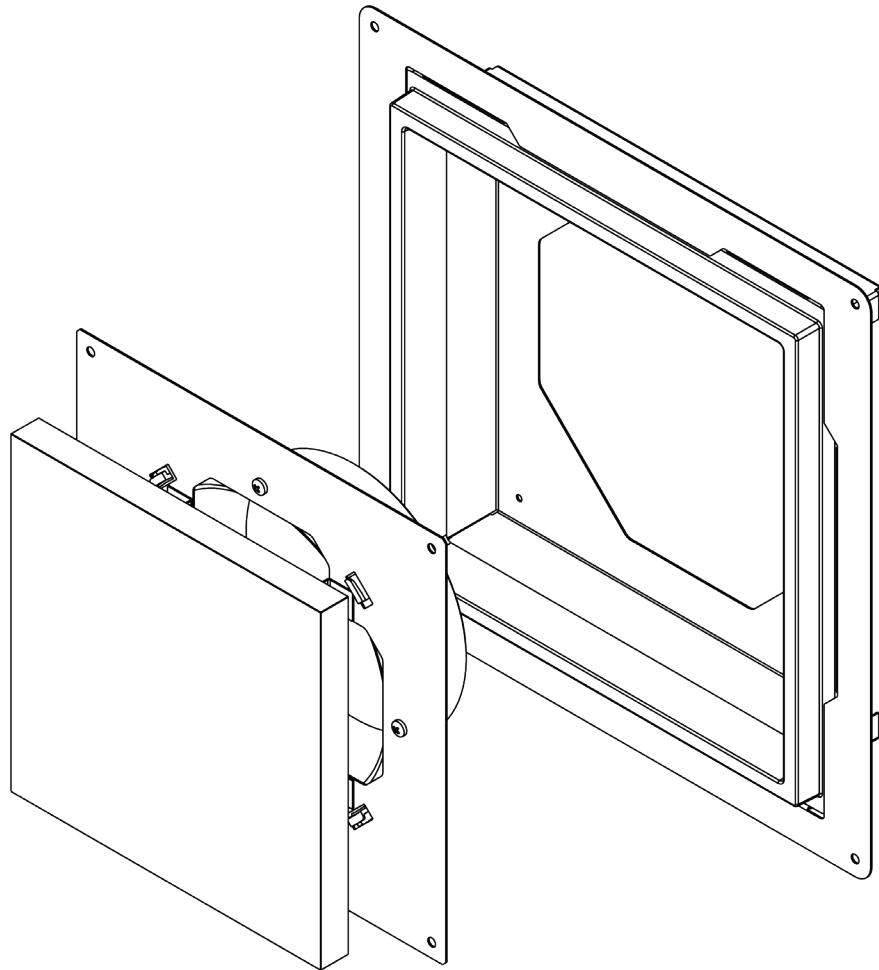


VIG3 - ILLUSION ARCHITECTURAL GRILLE



VYNCO INDUSTRIES (NZ) LIMITED

CHRISTCHURCH

388 Tuam Street, Phillipstown, Christchurch, 8011
PO Box 9022, Tower Junction, Christchurch 8149
New Zealand

P +64 3 379 9283 F +64 3 379 6838

E sales@vynco.co.nz

VYNCO.CO.NZ

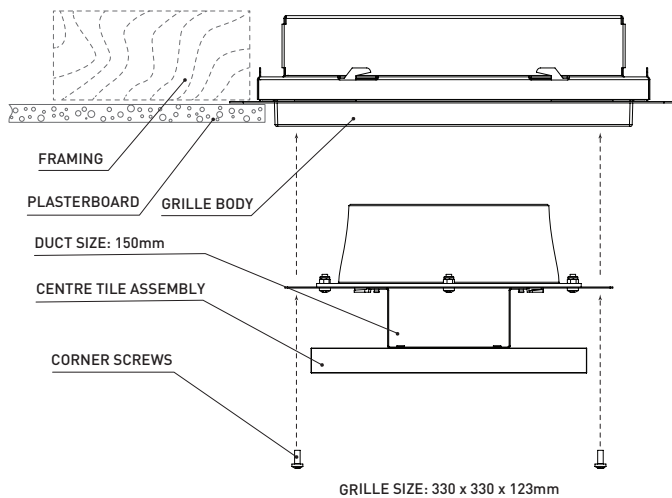
AUCKLAND

9 Levene Place, Mount Wellington
PO Box 12 249, Penrose, Auckland 1061
New Zealand

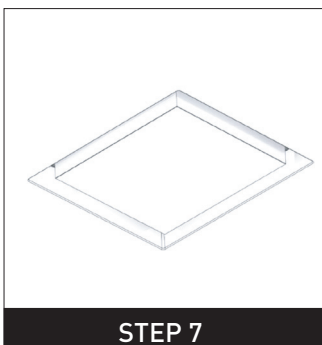
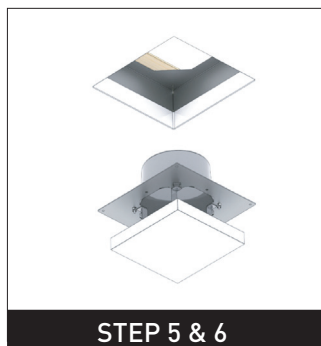
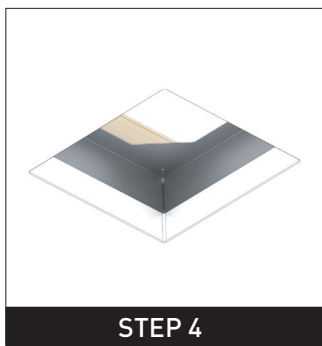
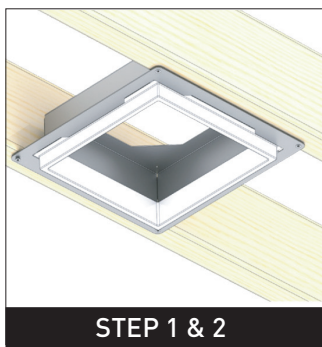
P +64 9 525 6051 F +64 9 525 5799

VIG3 - ILLUSION ARCHITECTURAL GRILLE

FITTING DIAGRAM



INSTALLATION DIAGRAM



INSTALLATION PROCEDURE

STEP 1

Remove centre tile assembly from grille by removing 4x corner screws.

STEP 2

Secure body of grille to ceiling framing / battens, ensuring that plaster step will finish flush with the outer surface of plasterboard when installed.

STEP 3

Cut out a square hole in plasterboard and secure around grille (cutting template supplied).

STEP 4

Plaster, sand and finish joint between plasterboard and grille. Note: plaster step of grille can be sanded as required to achieve flush finish.

STEP 5

Paint grille, ceiling and if desired grille centre tile to ceiling colour. Ensure internal edge of grille plaster step is painted.

STEP 6

Pull ducting through centre opening and secure to spigot on centre tile assembly with duct tape.

STEP 7

Insert centre tile assembly and duct into installed grille body and secure with 4x corner screws.

WARRANTY

This product is guaranteed for 5 years from the date of purchase.

This warranty protects against defects in workmanship and material. Any defects will be rectified by replacement if the goods are returned to place of purchase, with proof of purchase, and with a brief explanation of the experienced fault.

The warranty does not include compensation for any associated expenses involving installation or removal, such as labour or travel.

This warranty becomes null and void if, in our opinion, the product has been misused, tampered with or incorrectly installed.