



New DMS-line

MCB's and RCCB's / RCBO's
for domestic installations

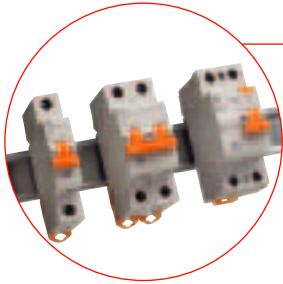


GE imagination at work

Compliant with domestic standards EN/IEC 60898-1 and EN/IEC 61008/9-1



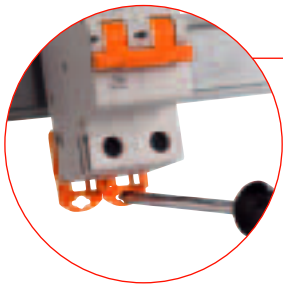
Safety terminals:
protects the installer
by excluding all risks.
Safe installation ensured



Quality clips
Easy fixation on DIN rail
User friendly and reliable



Clear identification:
- Current rating - Tripping curve
- Interrupting capacity
- Selectivity class
- Product codification
- Laserprinting

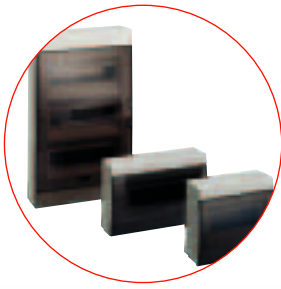


Bistable & dynamic clips
Ensure easy and reliable fixations
Flat and pozidrive screwdrivers



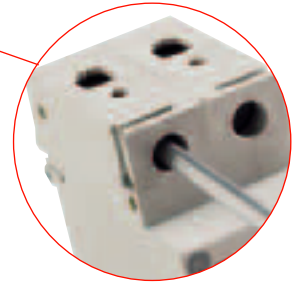
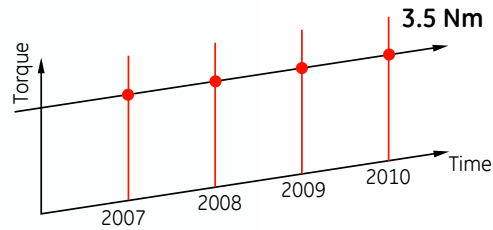
RCCB
No unwanted tripping
Flat and flush mounted orange push-button



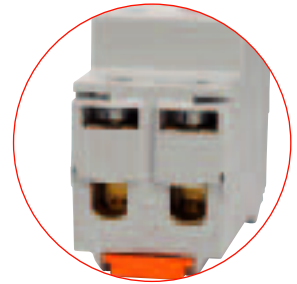


Abaco and Europe Line:
Insulated enclosures suited
for DMS-line installations

Strong and stable terminals



High torque terminals
3.5 Nm for MCB's
4.5 Nm for RCCB's



High capacity terminals
25mm² or 2 x 10mm² for MCB's
35mm² or 2 x 16mm² for RCCB's
Fork connection possibilities

Protected terminals IP 20



MCB's EN/IEC 60898-1

4500 3 6000 3

Performances



| | |
|---|------------------------------|
| Thermal setting In | 6-63A |
| Rated voltage AC Un | 230/400V |
| Tripping characteristic | C |
| Short-circuit capacity acc EN/IEC 60898-1 | 4.5kA / 6kA |
| Selectivity class | 3 |
| Terminal capacity | 25 or 2 x 10 mm ² |
| Poles | 1, 2, 3 |
| Weight | 115g/pole |

MCB's - Characteristic B 4.5kA

MCB's - Characteristic C 4.5kA

| In (A) | Cat. No. | Ref. No. |
|--------|----------|----------|
| 6 | DG41 B06 | 690668 |
| 10 | DG41 B10 | 690669 |
| 16 | DG41 B16 | 690670 |
| 20 | DG41 B20 | 690671 |
| 25 | DG41 B25 | 690672 |
| 32 | DG41 B32 | 690673 |
| 40 | DG41 B40 | 690674 |
| 50 | DG41 B50 | 690675 |
| 63 | DG41 B63 | 690676 |
| 6 | DG42 B06 | 690677 |
| 10 | DG42 B10 | 690678 |
| 16 | DG42 B16 | 690679 |
| 20 | DG42 B20 | 690680 |
| 25 | DG42 B25 | 690681 |
| 32 | DG42 B32 | 690682 |
| 40 | DG42 B40 | 690683 |
| 50 | DG42 B50 | 690684 |
| 63 | DG42 B63 | 690685 |
| 6 | DG43 B06 | 690686 |
| 10 | DG43 B10 | 690687 |
| 16 | DG43 B16 | 690688 |
| 20 | DG43 B20 | 690689 |
| 25 | DG43 B25 | 690690 |
| 32 | DG43 B32 | 690691 |
| 40 | DG43 B40 | 690692 |
| 50 | DG43 B50 | 690693 |
| 63 | DG43 B63 | 690694 |

| In (A) | Cat. No. | Ref. No. | Pack. |
|--------|----------|----------|-------|
| 6 | DG41 C06 | 690695 | 12 |
| 10 | DG41 C10 | 690696 | 12 |
| 16 | DG41 C16 | 690697 | 12 |
| 20 | DG41 C20 | 690698 | 12 |
| 25 | DG41 C25 | 690699 | 12 |
| 32 | DG41 C32 | 690700 | 12 |
| 40 | DG41 C40 | 690701 | 12 |
| 50 | DG41 C50 | 690702 | 12 |
| 63 | DG41 C63 | 690703 | 12 |
| 6 | DG42 C06 | 690704 | 6 |
| 10 | DG42 C10 | 690705 | 6 |
| 16 | DG42 C16 | 690706 | 6 |
| 20 | DG42 C20 | 690707 | 6 |
| 25 | DG42 C25 | 690708 | 6 |
| 32 | DG42 C32 | 690709 | 6 |
| 40 | DG42 C40 | 690710 | 6 |
| 50 | DG42 C50 | 690711 | 6 |
| 63 | DG42 C63 | 690712 | 6 |
| 6 | DG43 C06 | 690713 | 4 |
| 10 | DG43 C10 | 690714 | 4 |
| 16 | DG43 C16 | 690715 | 4 |
| 20 | DG43 C20 | 690716 | 4 |
| 25 | DG43 C25 | 690717 | 4 |
| 32 | DG43 C32 | 690718 | 4 |
| 40 | DG43 C40 | 690719 | 4 |
| 50 | DG43 C50 | 690720 | 4 |
| 63 | DG43 C63 | 690721 | 4 |




MCB's - Characteristic B 6kA

MCB's - Characteristic C 6kA

| In (A) | Cat. No. | Ref. No. |
|--------|----------|----------|
| 6 | DG61 B06 | 690722 |
| 10 | DG61 B10 | 690723 |
| 16 | DG61 B16 | 690724 |
| 20 | DG61 B20 | 690725 |
| 25 | DG61 B25 | 690726 |
| 32 | DG61 B32 | 690727 |
| 40 | DG61 B40 | 690728 |
| 50 | DG61 B50 | 690729 |
| 63 | DG61 B63 | 690730 |
| 6 | DG62 B06 | 690731 |
| 10 | DG62 B10 | 690732 |
| 16 | DG62 B16 | 690733 |
| 20 | DG62 B20 | 690734 |
| 25 | DG62 B25 | 690735 |
| 32 | DG62 B32 | 690736 |
| 40 | DG62 B40 | 690737 |
| 50 | DG62 B50 | 690738 |
| 63 | DG62 B63 | 690739 |
| 6 | DG63 B06 | 690740 |
| 10 | DG63 B10 | 690741 |
| 16 | DG63 B16 | 690742 |
| 20 | DG63 B20 | 690743 |
| 25 | DG63 B25 | 690744 |
| 32 | DG63 B32 | 690745 |
| 40 | DG63 B40 | 690746 |
| 50 | DG63 B50 | 690747 |
| 63 | DG63 B63 | 690748 |

| In (A) | Cat. No. | Ref. No. | Pack. |
|--------|----------|----------|-------|
| 6 | DG61 C06 | 690553 | 12 |
| 10 | DG61 C10 | 690554 | 12 |
| 16 | DG61 C16 | 690555 | 12 |
| 20 | DG61 C20 | 690556 | 12 |
| 25 | DG61 C25 | 690557 | 12 |
| 32 | DG61 C32 | 690558 | 12 |
| 40 | DG61 C40 | 690559 | 12 |
| 50 | DG61 C50 | 690560 | 12 |
| 63 | DG61 C63 | 690561 | 12 |
| 6 | DG62 C06 | 690569 | 6 |
| 10 | DG62 C10 | 690586 | 6 |
| 16 | DG62 C16 | 690570 | 6 |
| 20 | DG62 C20 | 690571 | 6 |
| 25 | DG62 C25 | 690572 | 6 |
| 32 | DG62 C32 | 690573 | 6 |
| 40 | DG62 C40 | 690574 | 6 |
| 50 | DG62 C50 | 690575 | 6 |
| 63 | DG62 C63 | 690576 | 6 |
| 6 | DG63 C06 | 690577 | 4 |
| 10 | DG63 C10 | 690578 | 4 |
| 16 | DG63 C16 | 690579 | 4 |
| 20 | DG63 C20 | 690580 | 4 |
| 25 | DG63 C25 | 690581 | 4 |
| 32 | DG63 C32 | 690582 | 4 |
| 40 | DG63 C40 | 690583 | 4 |
| 50 | DG63 C50 | 690584 | 4 |
| 63 | DG63 C63 | 690585 | 4 |

RCCB's EN/IEC 61008-1 - Type AC 

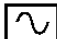
Performances

| | |
|---------------------------------|--|
| Thermal setting in | 25 - 63A |
| Residual Current $I_{\Delta m}$ | 30-300mA |
| Rated voltage AC Un | 2P: 230-400V |
| Short-circuit capacity | Inc = 6000A at 230V fuse 63A gG |
| Nuisance tripping resistance | AC: 250A 8/20 μ s |
| Terminal capacity | 35mm ² or 2 x 16mm ² |
| Poles | 2 |
| Weight | 2P: 210g |

RCCB's - Type AC



| In (A) | Cat. No. | Ref. No. | Pack. |
|--------|------------|----------|-------|
| 25 | DCG225/030 | 690776 | 6 |
| 40 | DCG240/030 | 690778 | 6 |
| 63 | DCG263/030 | 608413 | 6 |
| 25 | DCG425/030 | 608415 | 6 |
| 40 | DCG440/030 | 608417 | 6 |
| 63 | DCG463/030 | 608419 | 6 |
| 25 | DCG225/300 | 690777 | 6 |
| 40 | DCG240/300 | 690779 | 6 |
| 63 | DCG263/300 | 608414 | 6 |
| 25 | DCG425/300 | 608416 | 6 |
| 40 | DCG440/300 | 608418 | 6 |
| 63 | DCG463/300 | 608420 | 6 |

RCBO's EN/IEC 61009-1 - Type AC 

Performances

| | |
|---------------------------------|--|
| Thermal setting in | 6 - 40A |
| Residual Current $I_{\Delta m}$ | 30mA |
| Rated voltage AC Un | 2P: 230-400V |
| Short-circuit capacity | Inc = 6000A |
| Nuisance tripping resistance | AC: 250A 8/20 μ s |
| Terminal capacity | 35mm ² or 2 x 16mm ² |
| Poles | 2 |
| Weight | 2P: 210g |

RCBO's - Type AC



| In (A) | Cat. No. | Ref. No. | Pack. |
|--------|--------------|----------|-------|
| 6 | DDM60C06/030 | 690788 | 6 |
| 10 | DDM60C10/030 | 690789 | 6 |
| 16 | DDM60C16/030 | 690790 | 6 |
| 20 | DDM60C20/030 | 690791 | 6 |
| 25 | DDM60C25/030 | 690792 | 6 |
| 32 | DDM60C32/030 | 690793 | 6 |
| 40 | DDM60C40/030 | 690794 | 6 |