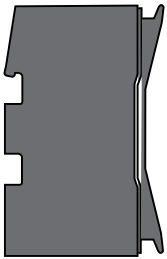


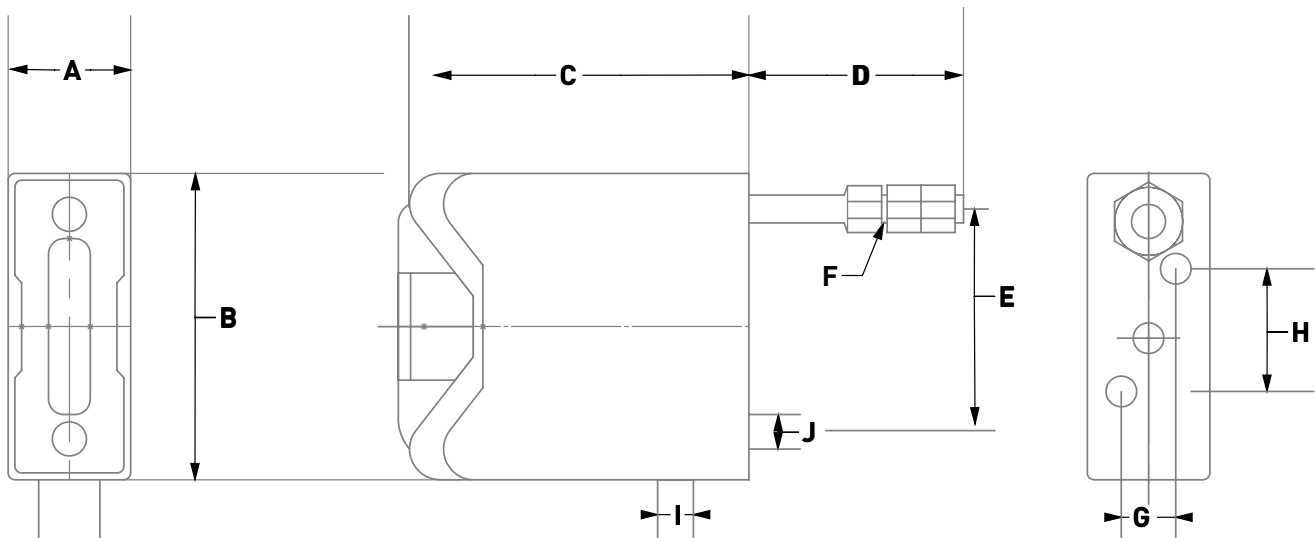
NEW FUSEHOLDERS RANGE



FUSE HOLDERS DIMENSIONS

| DIMENSION | A | B | C | D | E | F | G | H | I | J |
|-----------|----|-----|-----|----|----|-----|------|-----|-------|-------|
| V32Cxx | 25 | 77 | 58 | 39 | 56 | Ø6 | 0 | 0 | Ø6.4 | Ø6.4 |
| V63Cxx | 32 | 91 | 67 | 70 | 64 | Ø8 | 0 | 0 | Ø8.5 | Ø8.5 |
| VRS63xx | 35 | 110 | 75 | 84 | 78 | Ø8 | 13 | 6.5 | Ø9.5 | Ø9.5 |
| V63xxxx | 35 | 105 | 71 | 0 | 0 | 0 | 12.5 | 6 | Ø9.0 | Ø9.0 |
| VRS100xx | 51 | 140 | 100 | 87 | 94 | Ø10 | 19 | 22 | Ø12.7 | Ø12.7 |

All dimensions in mm



VYNCO

WWW.VYNCO.CO.NZ

facebook.com/vyncoindustriesltd/

AUCKLAND OFFICE

09 525 6051

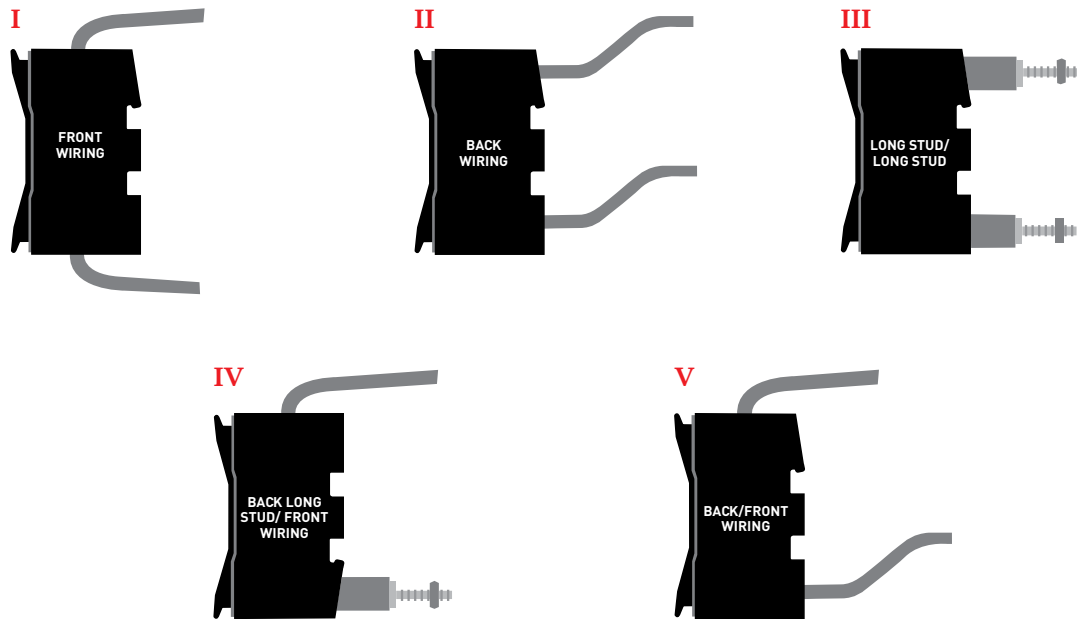
vyncoack@vynco.co.nz

CHRISTCHURCH OFFICE

03 379 9283

chchsales@vynco.co.nz

FUSE HOLDER SELECTION GUIDE



| FIXING CENTRES | CURRENT RATING (A) | VOLTAGE | WIRING CONFIGURATION | | DIAGRAM | ORDER CODE | TRADE PRICE \$ excl. GST | FUSE LINK OPTIONS |
|-----------------|--------------------|-----------|----------------------|----------------|---------|-----------------|-----------------------------|-------------------------------|
| | | | Front Wire | Back Wire | | | | |
| CLIP IN | 32 | 415V a.c. | Front Wire | Front Wire | I | V32CFF | \$24.00 | NS2 – NS32 |
| | | | Back Wire | Back Wire | II | V32CEE | \$24.00 | |
| | | | Back Long Stud | Back Long Stud | III | V32CBB | \$34.00 | |
| | | | Back Long Stud | Front Wire | IV | V32CFB | \$30.00 | |
| | 63 | 415V a.c. | Front Wire | Front Wire | I | V63CFF | \$58.50 | ES20 – ES63 |
| | | | Back Wire | Back Wire | II | V63CEE | \$59.00 | |
| | | | Back Long Stud | Back Long Stud | III | V63CBB | \$71.00 | |
| | | | Back Long Stud | Front Wire | IV | V63CFB | \$68.00 | |
| BOLT IN 73mm | 63 | 690V a.c. | Front Wire | Front Wire | I | VRS63H | \$68.00 | TIA2 – TIA32 TIS40 – TIS63 |
| | | 500V a.c. | Back Wire | Back Wire | II | V63BEBE | \$68.00 | |
| | | 690V a.c. | Back Long Stud | Back Long Stud | III | VRS63P | \$98.00 | |
| | | 690V a.c. | Back Long Stud | Front Wire | IV | VRS63PH | \$98.00 | |
| | | 500V a.c. | Front Wire | Back Wire | V | V63BEED | \$68.00 | |
| BOLT IN 94mm | 100 | 690V a.c. | Front Wire | Front Wire | I | VRS100H | \$165.00 | TCP40 TO TCP100 |
| | | | Back Wire | Back Wire | II | VRS100BW | \$165.00 | |
| | | | Back Long Stud | Back Long Stud | III | VRS100P | \$180.00 | |
| | | | Back Long Stud | Front Wire | IV | VRS100PH | \$175.00 | |